

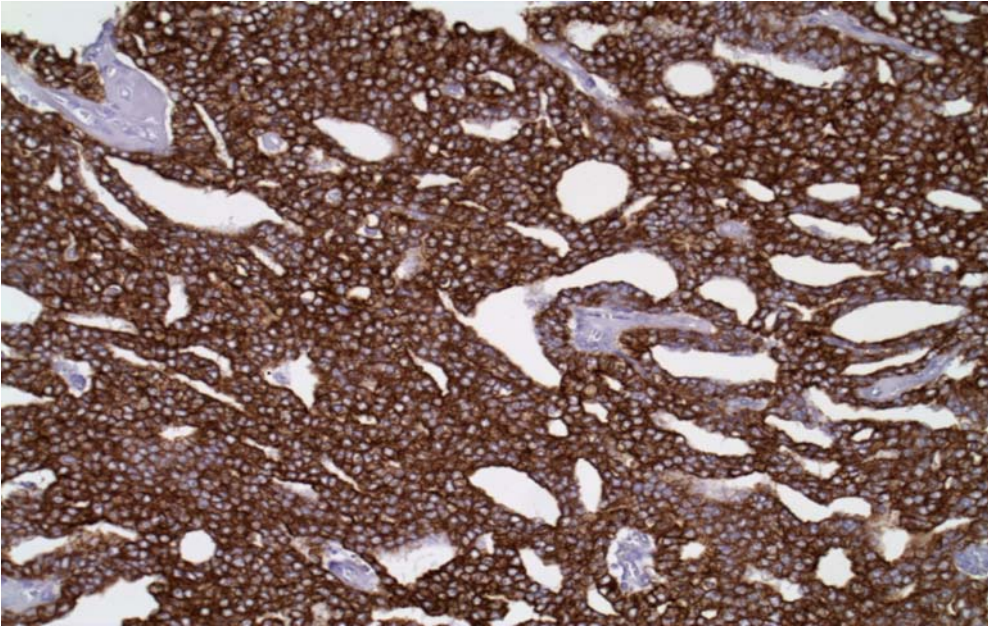
CYTOKERATIN OSCAR

Abbreviation: CK OSCAR

Clone: OSCAR

Positive Control: Any Carcinoma

Staining Pattern: Cytoplasmic



Applications: CK OSCAR demonstrates a broad spectrum of cytokeratin reactivity. In normal tissues, OSCAR is reactive with most epithelial types including; bile ducts and hepatocytes in liver, bladder epithelium, breast ducts, bronchial epithelium, endometrium, follicular dendritic cells of lymph node and tonsil, intestinal epithelium of: stomach, duodenum, ileum, colon, rectum, pancreas, ovarian epithelium, pancreatic acini, pituitary acini, pneumocytes, prostate, thyroid, skin: positive on the basal layer and negative on the superficial layers of squamous epithelium, positive on apocrine and sweat glands. In tumors, OSCAR is reactive with most carcinomas including; breast CA, TCC, RCC, lung adeno CA, lung small cell CA, lung squamous cell CA, endometrial CA, prostate CA, ovarian CA, HCC, colorectal CA, stomach CA, thyroid CA. It is negative in certain normal tissues including brain, lymphocytes and all cells of hemolymphoid origin, muscle, brain, nerves, endothelium and in certain tumors including melanoma, sarcoma, lymphoma, PNET / Ewings, GIST.



CLARIENT