

BLOOD GROUP RELATED ANTIGEN

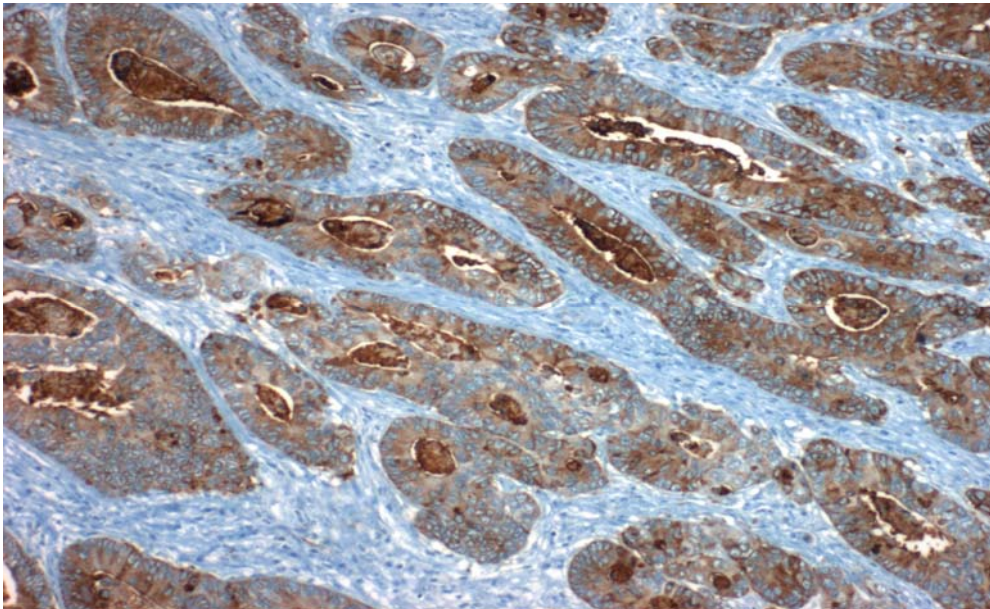
Abbreviation: Bg-8

Alternative Name: Lewis Y

Clone: F3

Positive Control: Lung or Colon Carcinoma

Staining Pattern: Cytoplasmic



Applications: This antibody is specific for Lewis Y (Type 2 Chain). The Lewis Y has been evaluated as a clinical marker for the diagnosis and prognosis of cholangiocarcinoma, hepatocellular carcinoma and breast cancer. It was also shown that Bg-8 reacts predominantly with adenocarcinomas of lung and focally or weakly with epithelial mesotheliomas.



CLARIENT